



CHOPIN INTERNATIONAL

powered by PAMFLOORS & SICON



**SOLID PARTNER
FOR YOUR
INVESTMENT**



QATARI EUROPEAN
INDUSTRIAL FLOORS
COMPANY
powered by PAM FLOORS



We are EXPERTS in industrial flooring.
We design, engineer and install various purpose floors, mainly:

- Logistic centers (all types, including high storage),
- Warehouses (shopping centers, supermarkets),
- Car parks (ground and multi- level),
- Industrial buildings (any kind of factories)

As a part of a group of companies with manufacturing and contracting facilities being the core of our business we deliver a complete flooring solution to our clients which is based on:

- a. A Professional Contracting Firm equipped with the latest machinery and highly experienced staff including operators, delivery engineers as well as certified project managers.
- b. A Factory SICON Poland- the largest European producer of industrial flooring materials and technologies, such as synthetic reinforcement, dry-shake, curing, impregnation, epoxy and polyurethane resins, materials and repair systems, etc.
- c. A Design Office- structural engineers and concrete technologists with a laboratory and R & D department.

**CHOPIN
INTERNATIONAL**
powered by PAMFLOORS & SICON

We are proud of having almost 12 million square meters of industrial flooring done in the European Union as well as in Russia, Belarus and Qatar.

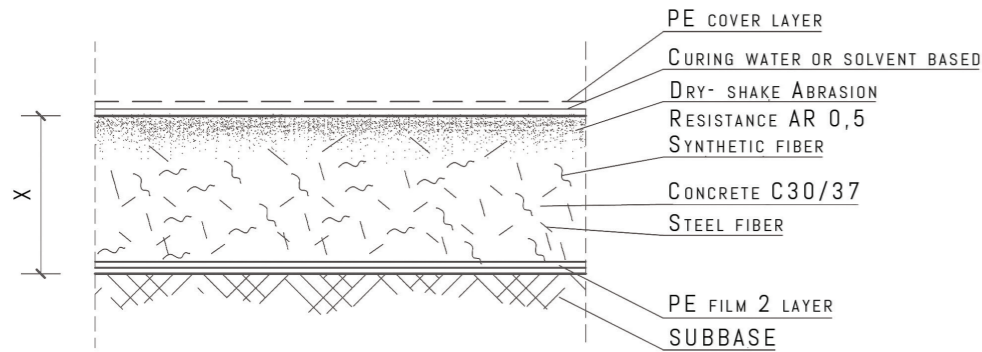
WHO WE
ARE?

FLOORS REALISATION IN EU:
MT TARGI / WARSAW

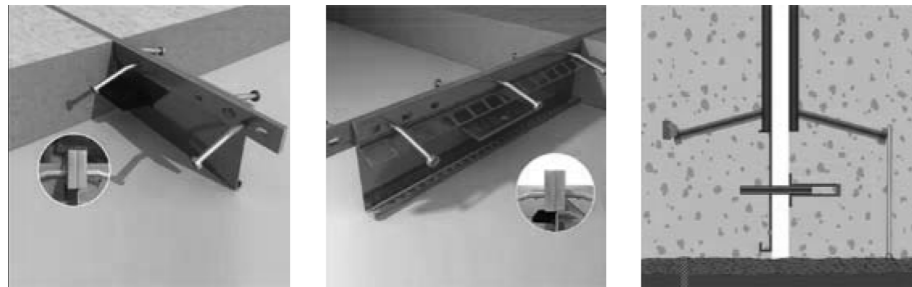


The proper structural design is one of the most critical aspects of the project and it greatly influences the price of the floor. That is why we have dedicated group of engineers focusing only on floor structural and technological properties. Thanks to that we can safely optimize all fundamental parameters such as: slab thickness, type of reinforcement (steel or synthetic), type of surface finishing (cement- mineral, epoxy or polyurethane) or dilatation systems.

Our SICON factory together with the LAB and the R&D department are ready to fulfill any, even the most technically demanding customer's requirement based on any material used in the flooring systems industry. That is why we can call it a complete technology, PAMFLOORS TECHNOLOGY.



— Typical floor cross-section



— Different joint systems



**FLOOR
STRUCTURAL
DESIGN**

FLOORS REALISATION IN QATAR
MKH TOWER / LUSAIL



**THE CONCRETE
AND THE
CHEMICAL
STRUCTURE OF
THE FLOOR**

**FLOORS REALISATION IN QATAR
NORTH EAST UNDERGROUND CAR PARK / TERNA**



**CHOPIN
INTERNATIONAL**
powered by PAMFLOORS & SICON

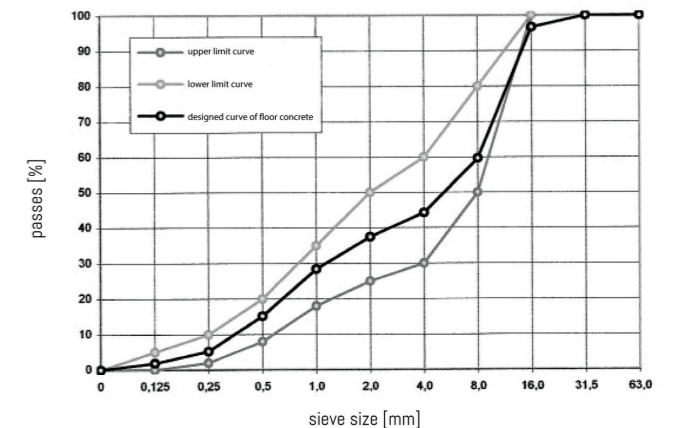
Consequences of using inexperienced contractors, neglecting this aspect of floor construction could prove to be catastrophic.

To reassure our customers, PAMFLOORS cooperates with the largest concrete laboratory in Poland belonging to BASF. Our engineers, under the BASF supervision, develop advanced recipes for concrete so it achieves the desired mechanical as well as specific properties requested and expected by the customer, such as: flatness, resistance to abrasion, and lack of cracking or delamination. In order to achieve this, we use different kinds of additives and chemical additions.

Those are added during the concrete production process – their type, quantity and the method of adding them are parts of design plan of PAMFLOORS.

— Part of a recipe for concrete floor. Aggregate screening

Another element of the production process consists of dedicated mineral and cement hardening toppings which are applied during the curing time of the concrete, after the slab has been poured and vibrated. Next, to ensure the proper curing of the concrete and to achieve the best micro-structure of the surface layer of the floor we apply a whole array of sealers: water based as well as solvents. Finally, we offer our customers help and advice in choosing the correct solvents to apply, to maximally extend the life of the floor. This also applies to all kinds of cleaning and maintenance solutions.



This aspect is the decisive factor for the success of the entire job. It is dependent on the correct choice of machinery (a virtual production line).

Thanks to the PAMFLOORS most modern technical solutions it is possible to reach the limits of technology and efficiency during processing of concrete. Computer controlled laser leveling of floor surfaces, while at the same time using a very effective vibrating technique, finishing with hydrostatic ride-on trowels (helicopters), applying sealers with super effective pumps, or finally early cutting of the flooring –

this is just a few among many techniques used by PAMFLOORS in the process of industrial flooring installation. This allows us to reduce human error to the minimum and leave the installation of the floor in the hands of only a small group of professionals: operators and technicians, whose qualifications are constantly being raised through constant training, including in the H&S.

UP TO:
5 000m² / ONE TEAM SHIFT
36 000m² / ONE TEAM WEEK
with the highest quality regime



**THE
INSTALLATION
PROCESS**

**FLOORS REALISATION IN QATAR
SOUQ WAQIF CAR PARK / DOHA**



**ET FLOOR
TECHNOLOGIES**
(EXTREME
TEMPERATURE
DESIGNED FOR
USE IN QATAR)

FLOORS REALISATION IN QATAR
MUSHEIREB HEART OF DOHA / PHASE 2



**CHOPIN
INTERNATIONAL**
powered by PAMFLOORS & SICON

It is worth noticing that many elements of the equipment used in Qatar have been modified to properly function in the local climate.

In order to produce best quality industrial flooring and at the same time offer very competitive price, all the elements have to be optimized to work with each other seamlessly and that is what PAMFLOORS does exceptionally well.

This is the reason why our technicians visited a number of concrete plants in Doha and analyzed available aggregates. Also we brought all types of cement available in Qatar to our labs in Europe and studied them. We performed a market analysis of concrete additives including their chemical makeup and their real influence on the process of floor installation. On the basis of

the analysis in our labs we optimized the slab surface hardener – a mineral and cement topping – including chemical additives, the type of cement and additional minerals. We selected the reinforcing material, both synthetic and steel, to ensure the stability of the floor structure but also to achieve the best results connected with the curing of the concrete, especially the reduction of structural tension.

ET FLOOR TECHNOLOGIES is not only material technology but foremost the technology of installation. Relying on our experience we assembled a veritable “production line” consisting of machines and accessories of world leader producers capable of completing jobs in high temperatures with high efficiency and fulfilling the highest quality standards of for example TR34.

Design stage:

We offer an assistance in the design or value engineering of the floor including a price / feature analysis of the possible variants.

Our engineering departments deliver full design including: static calculations, details, cross sections, pouring plans, concrete mix design, material supervision etc. Everything with compliance to QCS 2014, BS, EN, ACI, IBC, SBC and others.

Installation stage:

We offer 4 complete teams fully equipped with the machinery to reach the level of super efficiency with maximum quality.

Our factory is able to deliver fully compatible with each other materials to fulfill efficiency of floor production and the highest standards.

Service and maintenance stage:

We offer consultancy regarding floor utilization during and after the warranty period. It means not only cleaning procedure, but also repairing and refurbishment systems.



**WE OFFER
COMPREHEN-
SIVE SERVICE AT
EVERY STAGE:**

FLOORS REALISATION IN EU:
MT TARGI / WARSAW



OUR OFFICE IN EU:

Lipowa str # 32,
P.O. BOX 15424 Białystok
POLAND

Phone: **+48 691 840 400**
office@pamfloors.eu

OUR PLANT IN EU:

SICON POLSKA Sp. z o.o.
Rudna Mała 47,
P.O. BOX 36-060 Głogów Małopolski
POLAND

Phone: **+48 603 420 218**
biuro@sicon.pl

OUR OFFICE IN QATAR:

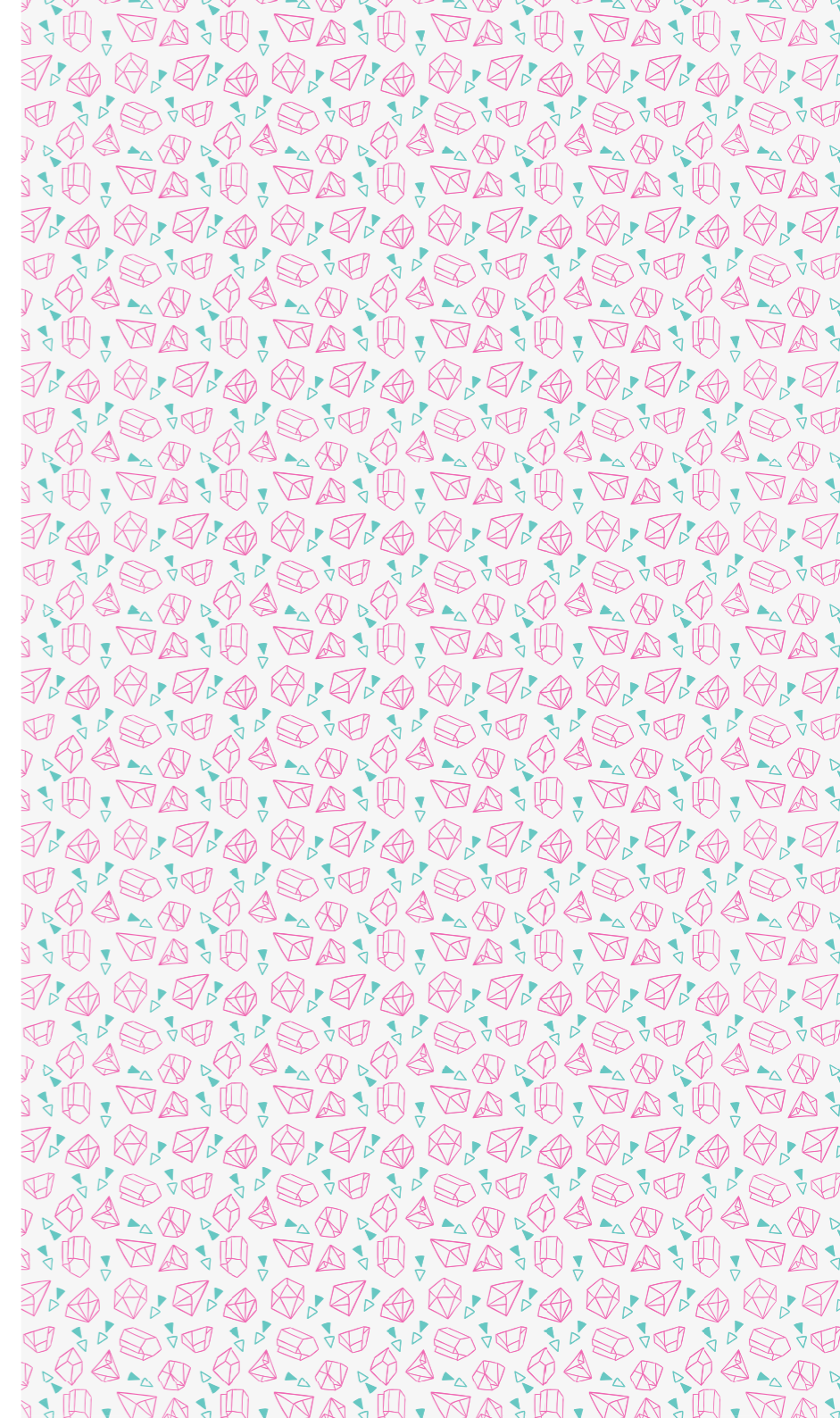
Bin Hashem str # 26,
P.O. BOX 25109 Doha
QATAR

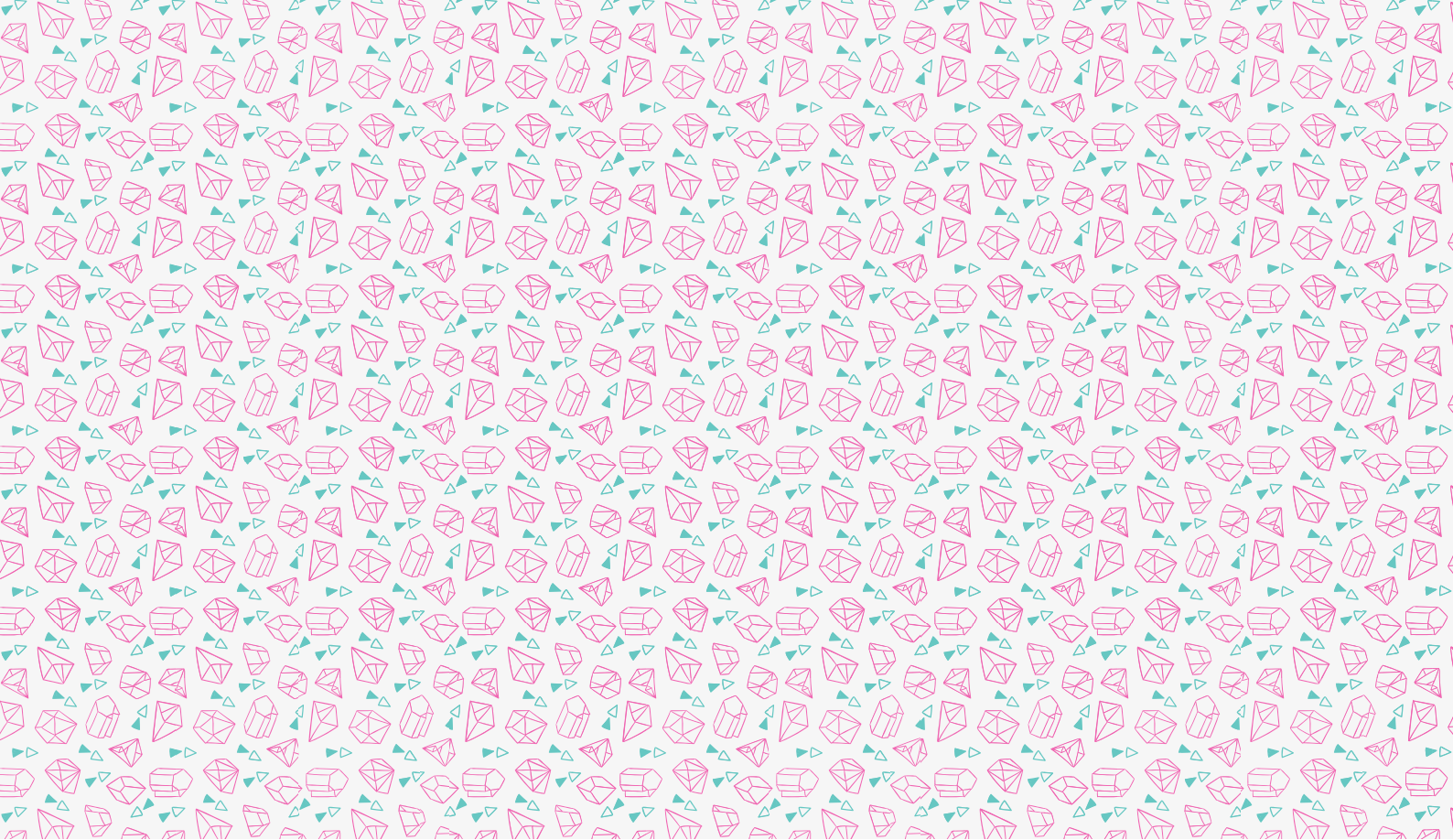
Phone: **+974 66 056 221 / 227**
office@chopin-international.com

OUR OFFICE IN RUSSIA

Elektricheskij str # 3/10,
P.O. BOX 115419 MOSCOW
RUSSIA

Phone: **+0048 514 132 559**
office@pamfloors.eu





**CHOPIN
INTERNATIONAL**

powered by PAMFLOORS & SICON

chopin-international.com
